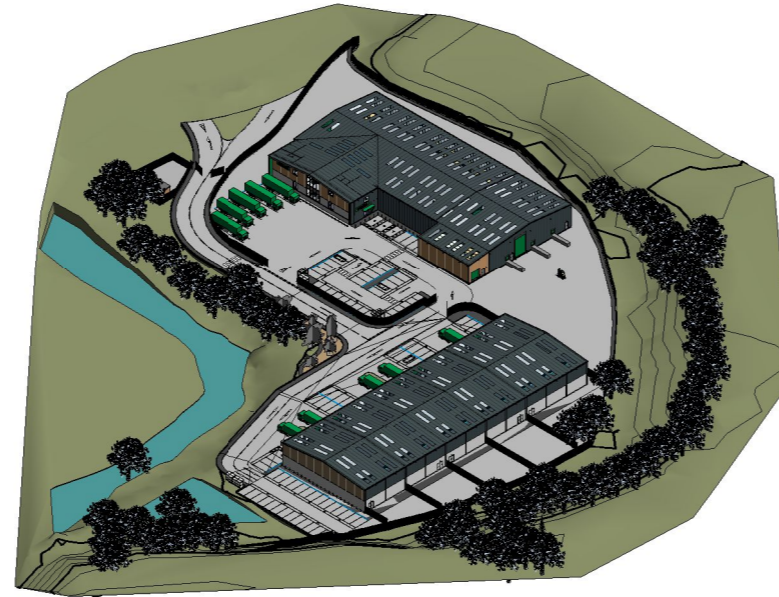
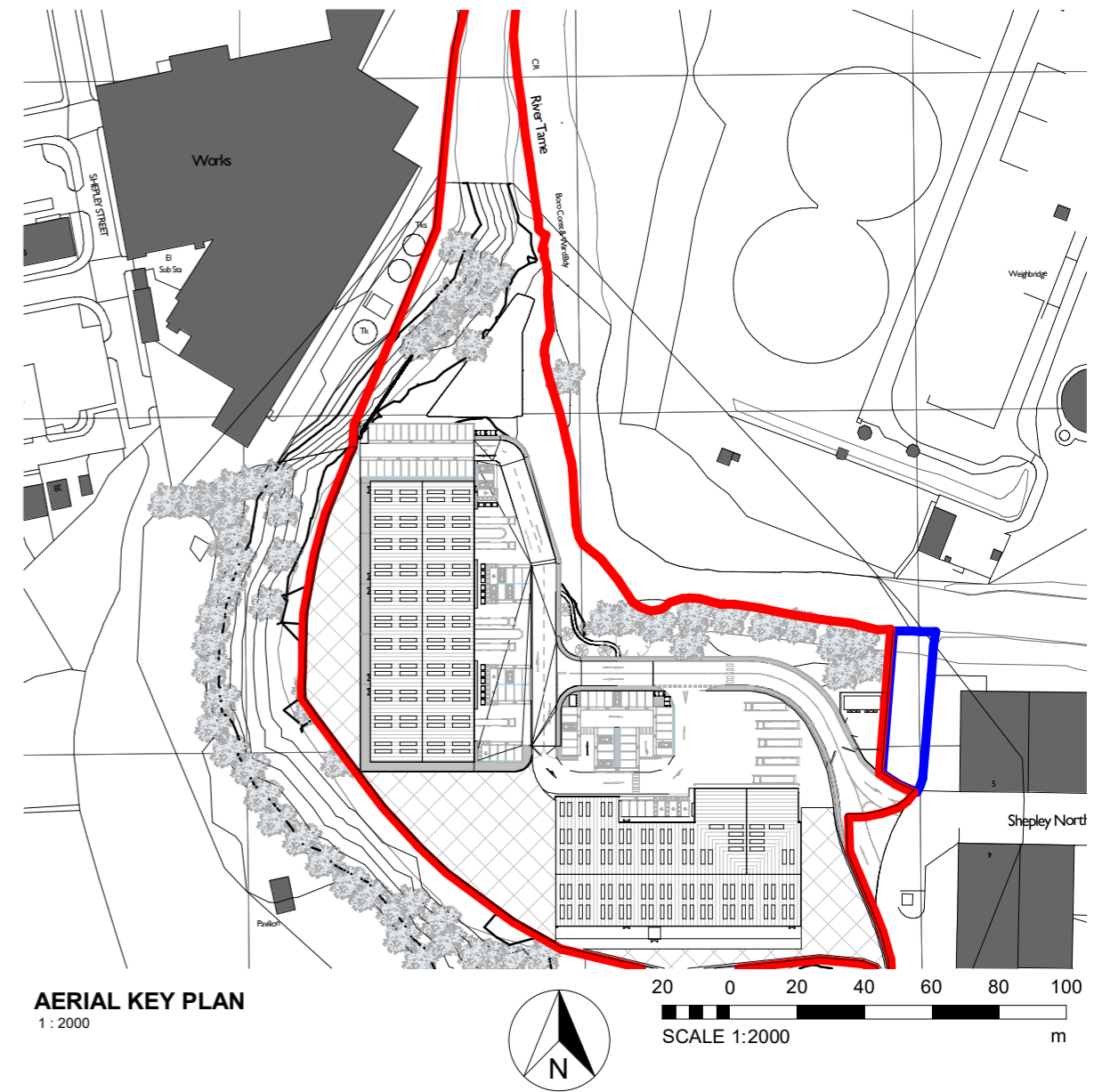


SITE AERIAL FROM SOUTH EAST

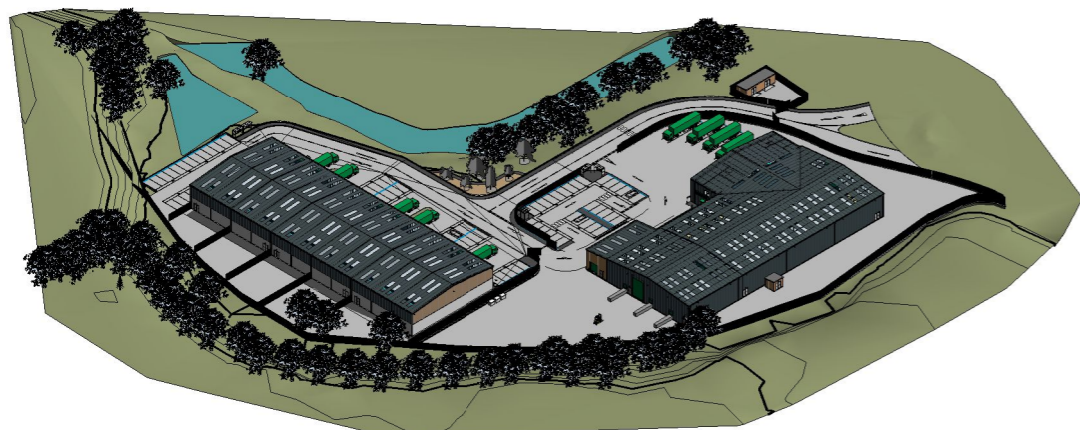


SITE AERIAL FROM NORTH WEST

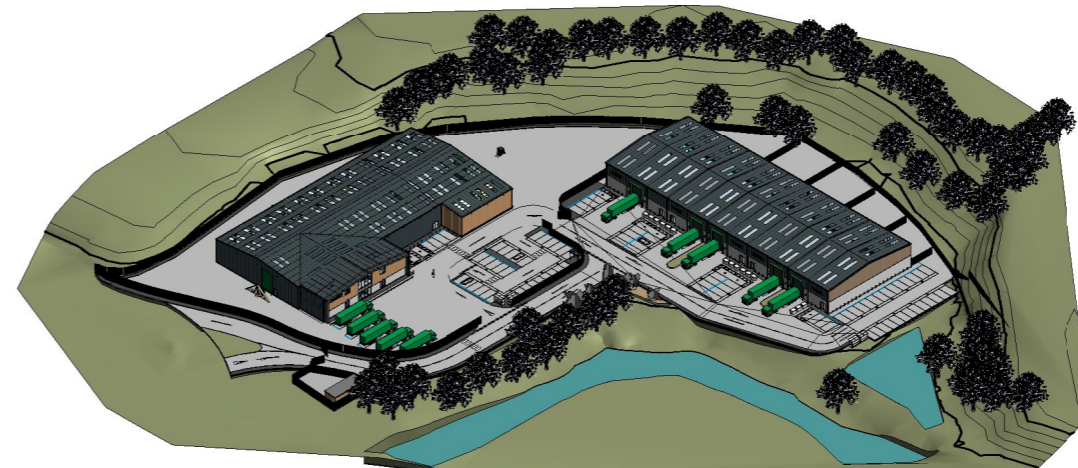


AERIAL KEY PLAN
1 : 2000

SCALE 1:2000
m



SITE AERIAL FROM SOUTH WEST



SITE AERIAL FROM NORTH EAST

REV	DESCRIPTION	DATE	ISSUED BY	ISSUED TO
D	INCREASED BICYCLE STORAGE ALLOCATION, REDUCED CAR PARKING, ADDED BIN STORAGE	26.10.21	BC	AS
C	RAISED DRY STORAGE ROOF, REPOSITIONED COMPRESSOR STORAGE	17.09.21	BC	AS
B	DIVIDED WAREHOUSE BLOCK INTO SIX LINES, ADJUSTED SITE LEVELS, PARKING AND ROAD LAYOUT, AMENDED KEY.	25.08.21	BC	AS
A	REPOSITIONED BUILDING TO AVOID RESTRICTED COVENANT AREA	02.08.21	BC	AS

REVISIONS

Guidance:
Refer to the following documents for guidance on the BIM Standards and review process:
A. BIM Project Approval Form
B. BIM Project Strategy Manual
C. BIM Execution Plan Standard
(All issued by PPG/OCCL/REVIT)

REA prepared this model using Revit 2017 and does not accept liability for any loss or degradation of the information held in the model resulting from the translation from the original file format or from the recipient's reading of it in any other program or on another version of Revit.

CLIENT
HOWARTH TIMBER LTD



PROJECT
LAND NORTH WEST OF SHEPLEY INDUSTRIAL ESTATE,
SHEPLEY ROAD, AUDENSHAW, M34 5DR

TITLE
AERIAL VIEWS

DATE
JULY 2021

SCALE
1 : 2000

STATUS
PLANNING

REVISION D	Richard Eves Architects LLP Alexandra Villa, 3 Victoria Avenue, Harrogate, HG1 1EQ Tel: 01423 504488 Fax: 01423 500015 office@rarchitects.co.uk
DRAWING NUMBER 2083.031	richard eves ARCHITECTS